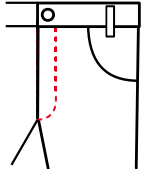
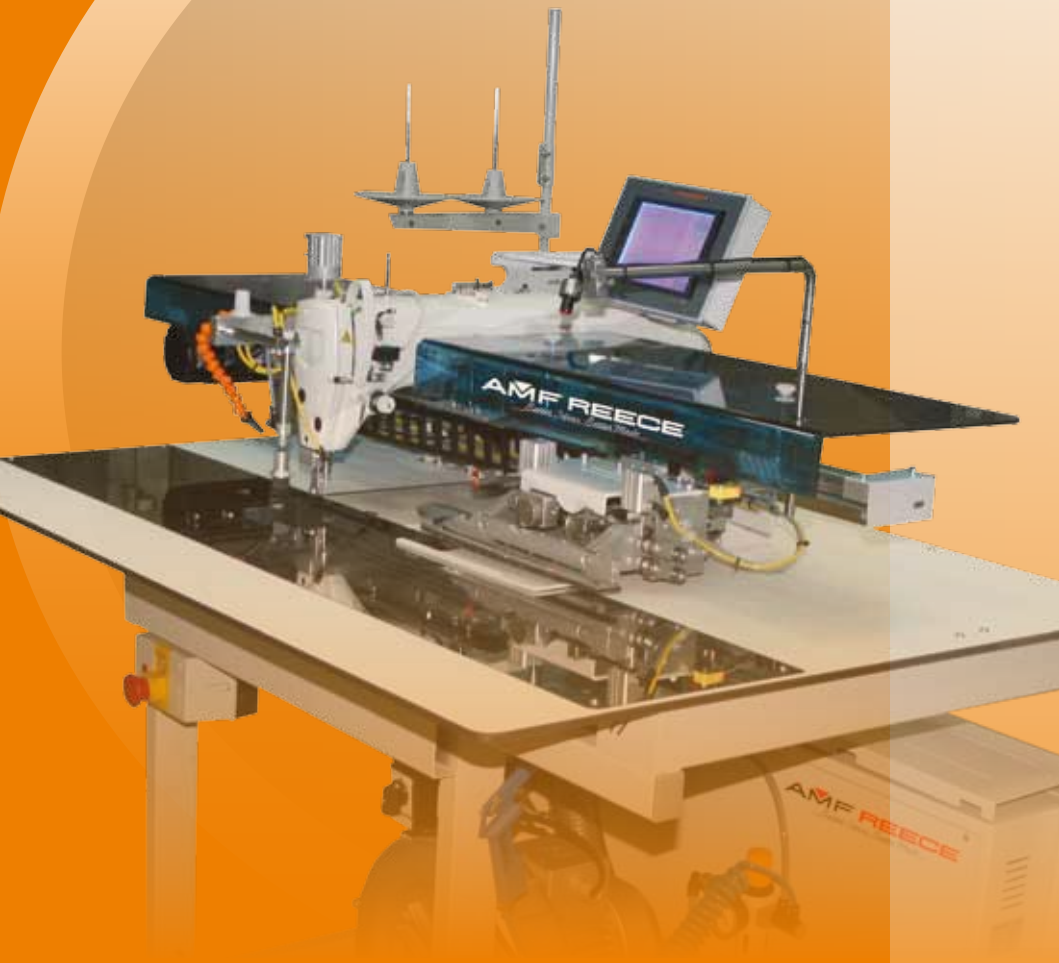


SP-2600

Sewing Unit for sewing side pockets



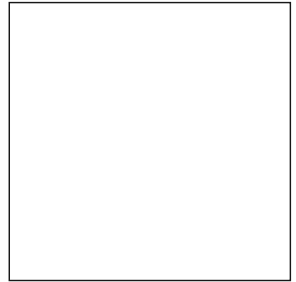
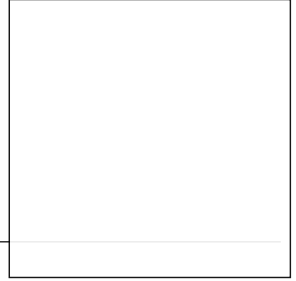
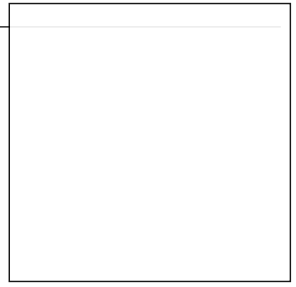
The side pocket sewer is used for top stitching side pockets with uniform seam quality and high productivity on trouser applications.



AMF[®] REECE
Better Ideas, Better Made

Standard Features

- AC Servo Motor Combined with PLC Control System to Ensure Reliable Operation
- Touch Screen Display Panel for Setting all Parameters
- Automatic cutting and folding of fabric
- Sensor activated start and finish of sewing sequence
- Pneumatic thread trimming
- Backtacking at start and finish
- Needle thread monitor
- Laser marking light for fabric positioning
- Vacuum System for connecting to factory's central source or individual vacuum motor

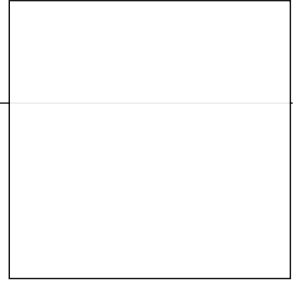


Sewing Procedure

- The desired seam width is selected on the touch screen and also mechanically adjusted on the folding station from a knob.
- The fabric is placed on the table.
- The cutter cuts and folds the fabric.
- The clamp moves the fabric to exact sewing position and a blower unit removes the fabric after sewing.

Optional Accessories

- Vacuum motor



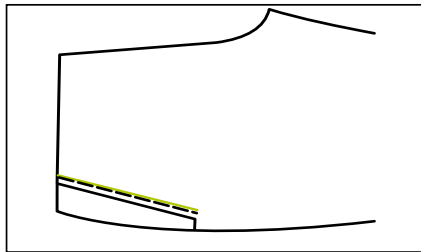
Technical Specifications

Sewing Head	Brother S-7200 Lockstitch
Sewing Width	1 - 9mm
Maximum Sewing Length of Pocket	240 mm
Stitch Length	0,5 - 5 mm
Memory	49



Production Data 2,000 side pockets per 8 hours

Applications



Distributor

World

Headquarters AMF Reece Inc., Czech Republic
 Tovární 837
 796 25 Prostějov
 Phone: +420 582 309 275
 Fax: +420 582 360 608
 E-mail: marketing@amfreece.com

Website: www.amfreece.com